


How to get raw data (UART) of TF series lidar via Arduino - TF03 UART

1, Software

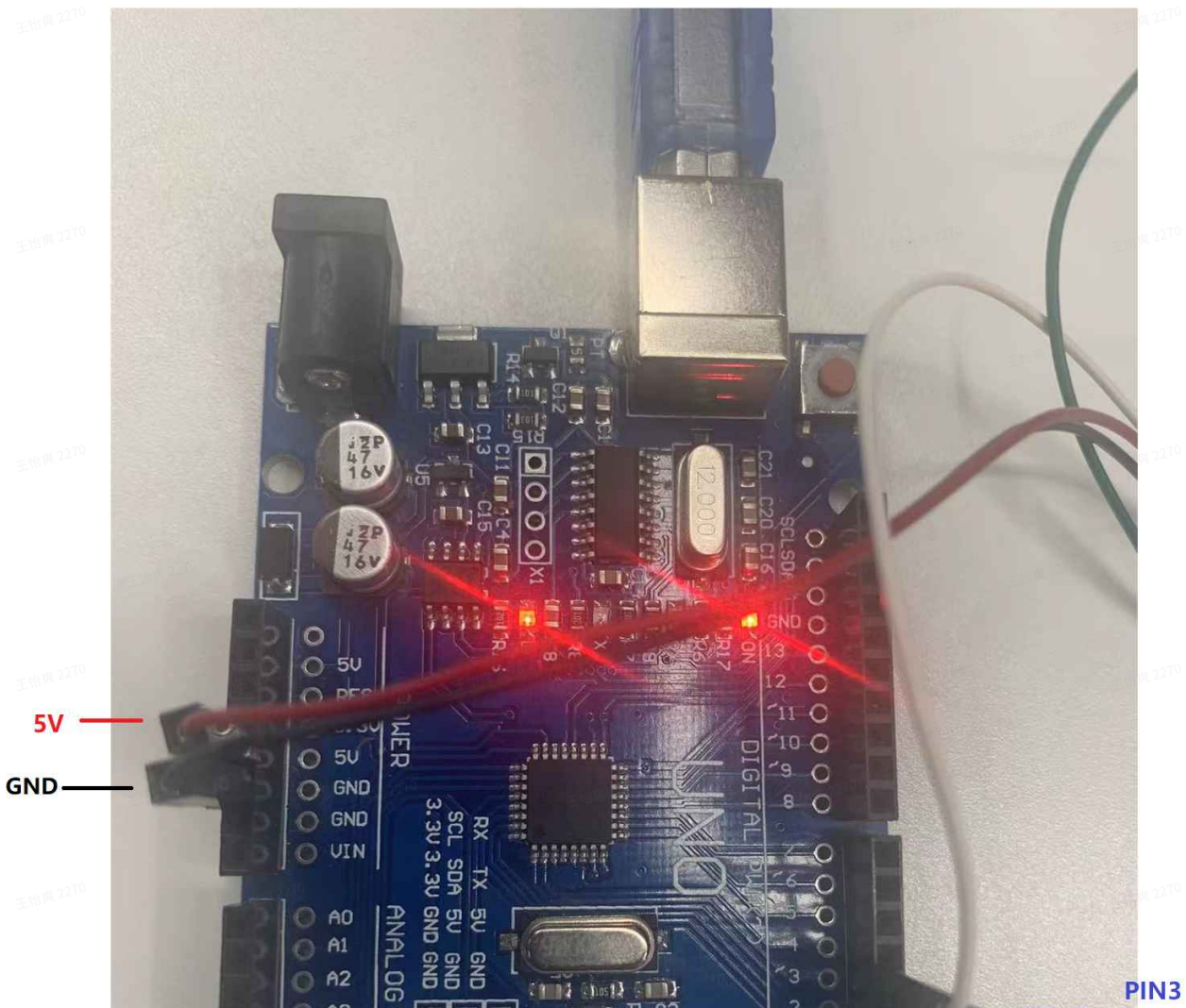
 serial_port_utility_latest.exe

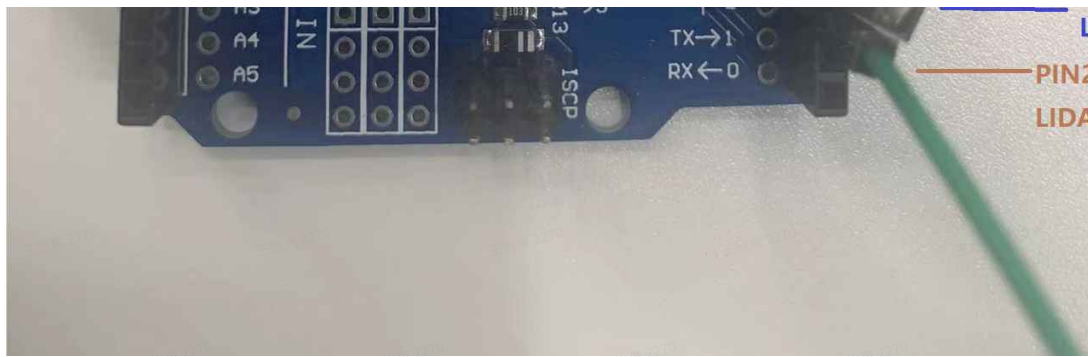
a, serial_port_utility_(Any common serial/COM software is OK)

b, Arduino IDE

2, Hardware Connection

Connect TFseries lidar to Arduino





TF03 UART

UART_RXD Blue wire color

UART_TXD Brown wire color

5V

GND

Arduino

TX

RX

5V

GND

3, Communication

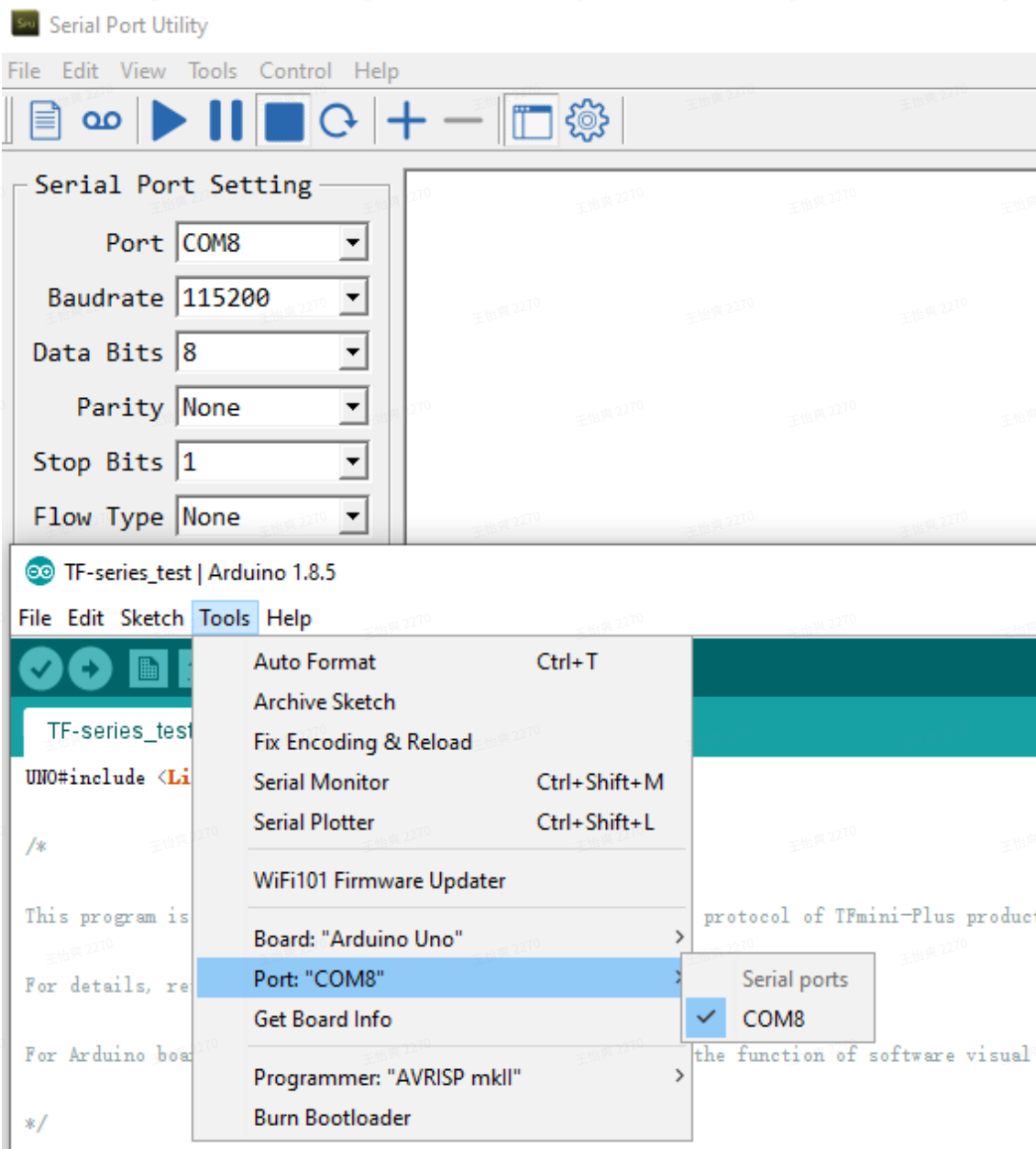
Check if the hardware connection is ok, then open the software.

1) Upload 'TF03_UART_test.ino' to Arduino UNO

Monitoring data via Arduino 'Serial Monitor'

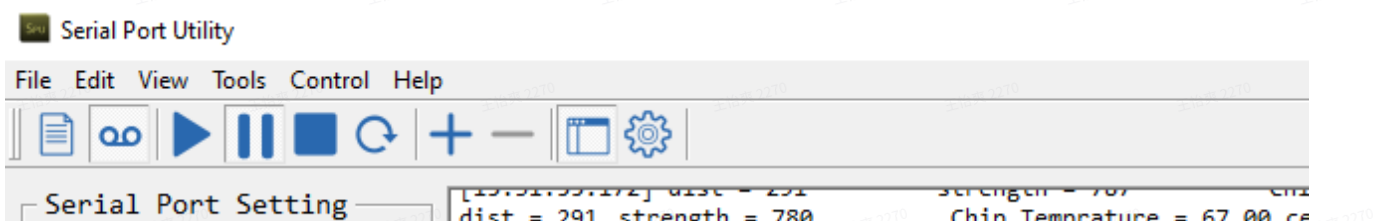
2) Monitoring data via serial_port_utility_

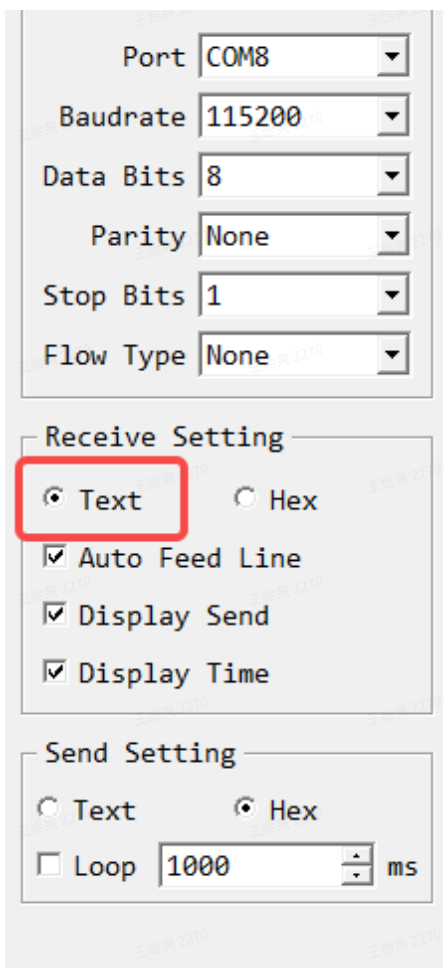
a,choose 'COM-X-Enhanced COM Port' and other settings as below



b,click 'Start' , then will see the data

Remember to choose the 'Text'

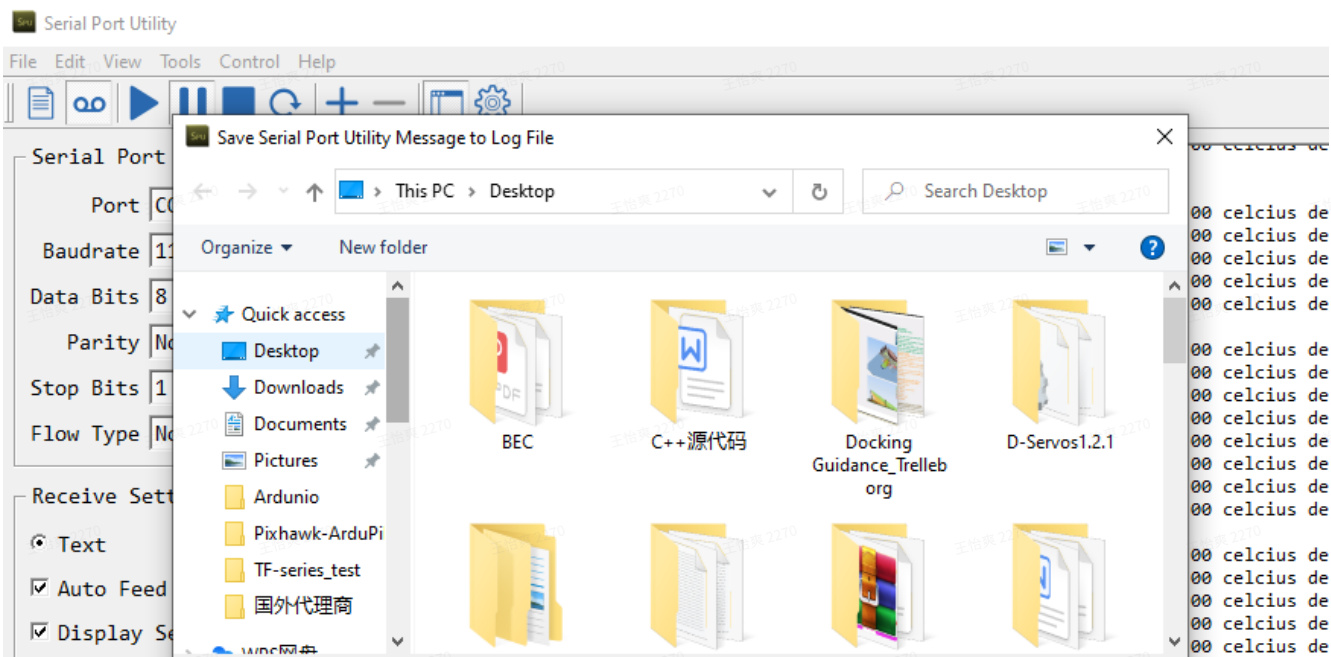




```
dist = 290 strength = 787
[15:31:55.210] dist = 291
[15:31:55.226] dist = 290
[15:31:55.235] dist = 291
[15:31:55.258] dist = 291
[15:31:55.283] dist = 291
dist = 291 strength = 795
[15:31:55.299] dist = 291
[15:31:55.305] dist = 290
[15:31:55.315] dist = 291
[15:31:55.334] dist = 292
[15:31:55.346] dist = 292
[15:31:55.354] dist = 292
[15:31:55.374] dist = 291
[15:31:55.409] dist = 291
dist = 290 strength = 788
[15:31:55.417] dist = 292
[15:31:55.424] dist = 291
[15:31:55.434] dist = 292
[15:31:55.453] dist = 292
[15:31:55.505] dist = 291
[15:31:55.534] dist = 291
[15:31:55.576] dist = 292
[15:31:55.616] dist = 291
[15:31:55.654] dist = 292
[15:31:55.663] dist = 291
[15:31:55.674] dist = 292
[15:31:55.685] dist = 291
[15:31:55.694] dist = 292
[15:31:55.712] dist = 292
[15:31:55.733] dist = 291
```

```
Chip Temperature = 67.00 ce
Chip Temperature = 67.00 ce
strength = 791 Chi
strength = 786 Chi
strength = 793 Chi
strength = 784 Chi
strength = 793 Chi
Chip Temperature = 67.00 ce
strength = 788 Chi
strength = 791 Chi
strength = 782 Chi
strength = 787 Chi
strength = 787 Chi
strength = 793 Chi
strength = 785 Chi
strength = 791 Chi
Chip Temperature = 67.00 ce
strength = 790 Chi
strength = 787 Chi
strength = 796 Chi
strength = 787 Chi
strength = 781 Chi
strength = 789 Chi
strength = 795 Chi
strength = 783 Chi
strength = 788 Chi
strength = 795 Chi
strength = 791 Chi
strength = 787 Chi
strength = 792 Chi
strength = 783 Chi
strength = 792 Chi
```

C, save the log



Display T

Send Setting

Text

Loop 1000

File name:

Save as type: Message Log(*.txt)

Hide Folders

Save Cancel

[15:31:55.712] dist = 292 strength = 783 Chip Temperature = 67.00 celcius de
[15:31:55.733] dist = 291 strength = 792 Chip Temperature = 67.00 celcius de