

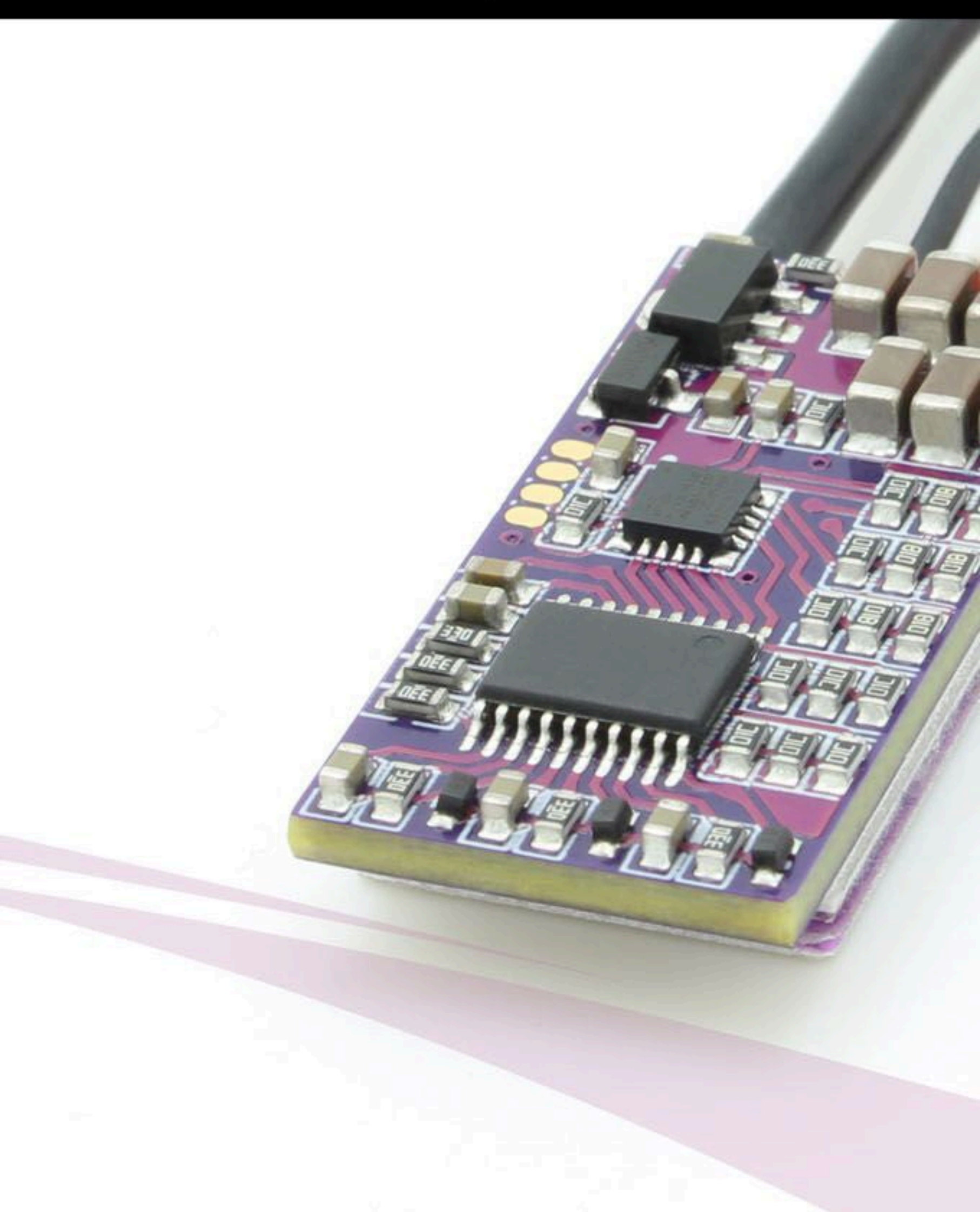
EMAX NEW FPV ESC

Bullet Series

SMALL



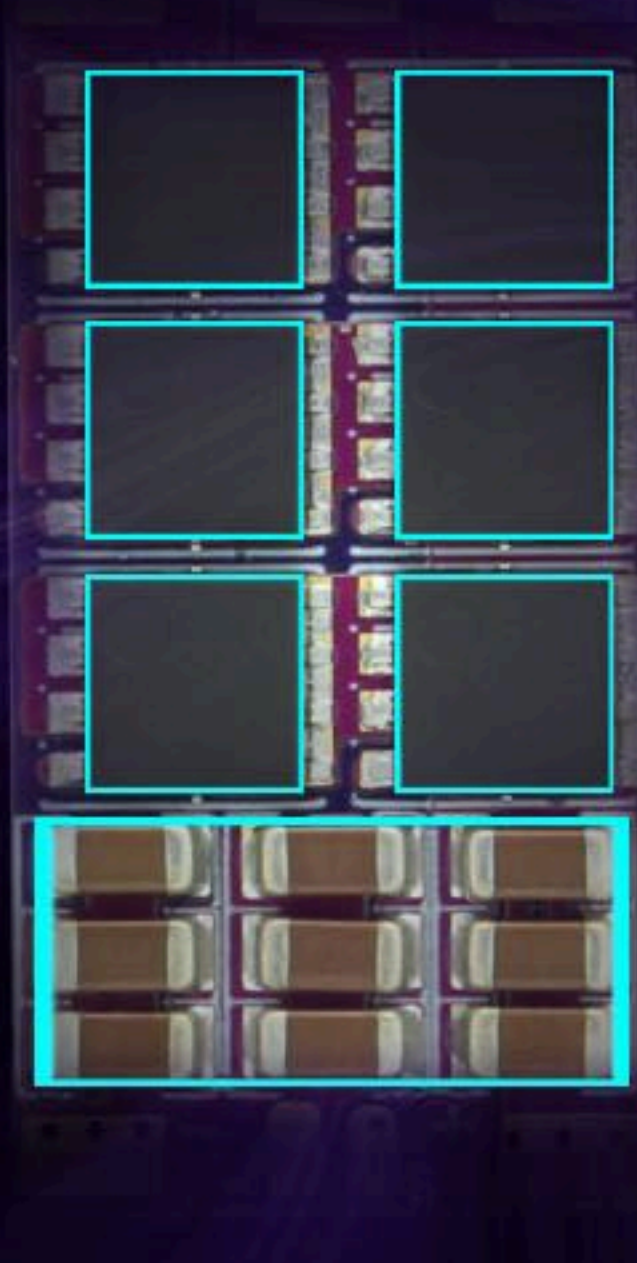
Brand new bullet series (purple), super-mini, ultra-light ESC



BLHeli-S firmware/supports MULTISHOT, ONESHOT42, ONESHOT125



New heat sink design both effectively reduces the core temperature, and avoids propeller strike damage



JAPAN TOSHIBA MOSFET

Murata ceramic capacitors

Imported MOSFET, Japanese ceramic capacitors, 3oz High-TG PCB board, significantly reduces electrical heat soak and improves system efficiency

BULLET



| Item | Continuous Current | Burst Current | Li-xx Battery (cell) | Dimension L x W (mm) | Weight (g) W/O wires | MCU | BEC |
|-------------------------|--------------------|---------------|----------------------|----------------------|----------------------|---------|-----|
| DSHOT BULLET 6A ESC | 6A | 10A | 2S | 9.4 x 21.5 | 2.1 | EFM8BB2 | NO |
| DSHOT BULLET 12A ESC | 12A | 15A | 2S-4S | 11.0 x 15.0 | 2.4 | | |
| DSHOT BULLET 15A ESC | 15A | 25A | 2S-4S | 11.9 x 19.6 | 3.5 | | |
| DSHOT BULLET 20A ESC | 20A | 30A | 2S-4S | 11.9 x 19.6 | 3.5 | | |
| DSHOT BULLET 30A ESC | 30A | 35A | 2S-4S | 11.9 x 19.6 | 3.9 | | |
| BLHELI-S BULLET 35A ESC | 35A | 40A | 3S-6S | 14.4 x 29.0 | 6.3 | | |