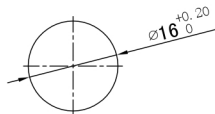
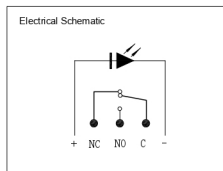
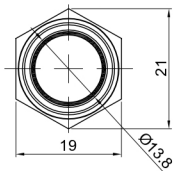
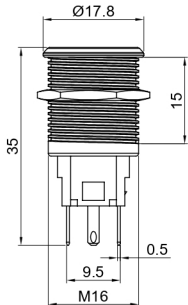


更改	说明	修改人	审核



Specifications

Function: Momentary
 Contact Arrangement: SPDT 1NO1NC
 Mounting Type: Threaded Front Panel Mount
 Torque For Threaded Body: 5-14Nm
 LED Illumination: With LED, Any color is available.

Mechanical

Operating Life: $\geq 500,000$ Cycles
 Total Travel: About 3.0mm
 Operating Force: $3.5 \pm 1N$

Electrical

Contact Rating: 5A 250VAC ; 10A 125VAC
 2A 48VDC ; 10A 12VDC

Operating Life: $\geq 50,000$ Make-and-Break Cycles at Full Load
 Dielectric Strength: 2,000V RMS @Sea Level
 Insulation Resistance: 1,000M Ω Min @500VDC
 Contact Resistance: 50m Ω max

Materials

Bushing: Stainless Steel / Brass Nickel Plated / Aluminum Alloy
 Base: PBT (UL94-V0)
 Actuator: Stainless Steel / Brass Nickel Plated / Aluminum Alloy
 Internal Assembly: POM/PA66
 Spring: Steel
 Sealing/O-Ring: Silicone
 Terminals: Brass with Gold Plated
 Contact: Copper Silver Plated

Operating Environment

Operating Temperature: -25 $^{\circ}C$ to +55 $^{\circ}C$
 Sealing/Protection: IP65

NOTE: Specifications and materials listed above are for switches with standard options. For information on specific and custom switches, please contact Customer Service.

乐清市戴尔电子有限公司 YUEQING DAIER ELECTRON CO., LTD					
DR. 制图			APPD 审核		
DE. 设计			CHKD 校对		
DIMENSIONS		Tolerance	SCALE 比例 1.5/1	UNIT 单位 mm	
0.00 ~ 10.00mm		$\pm 0.15mm$	TITLE 名称 PUSH BUTTON SWITCH		
10.01 ~ 30.00mm		$\pm 0.20mm$	DWG NO. 图号 LAS3-16F-W11EM		SIZE 图纸 A
30.01 ~ 80.00mm		$\pm 0.25mm$	FILE NAME 档案名称		SHEET 张 1/1
80.01 ~ 150.00mm		$\pm 0.30mm$			REV. 更改 1
150.01mm?		$\pm 0.40mm$			