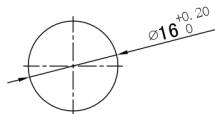
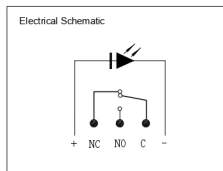
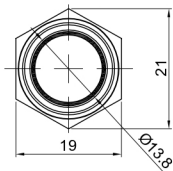
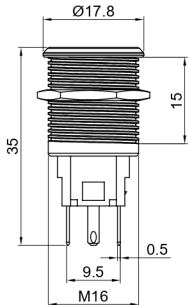


更改	说明	修改人	审核



PANEL CUTOUT  
MAX.PANEL THICKNESS  
13mm

### Specifications

Function: Alternate (Latching)  
Contact Arrangement: SPDT 1NO1NC  
Mounting Type: Threaded Front Panel Mount  
Torque For Threaded Body: 5-14Nm  
LED Illumination: With LED, Any color is available.

### Mechanical

Operating Life:  $\geq 500,000$  Cycles  
Total Travel: About 3.0mm  
Operating Force:  $3.5 \pm 1N$

### Electrical

Contact Rating: 5A 250VAC ; 10A 125VAC  
2A 48VDC ; 10A 12VDC

Operating Life:  $\geq 50,000$  Make-and-Break Cycles at Full Load  
Dielectric Strength: 2,000V RMS @Sea Level  
Insulation Resistance: 1,000M $\Omega$  Min @500VDC  
Contact Resistance: 50m $\Omega$  max

### Materials

Bushing: Stainless Steel / Brass Nickel Plated / Aluminum Alloy  
Base: PBT (UL94-V0)  
Actuator: Stainless Steel / Brass Nickel Plated / Aluminum Alloy  
Internal Assembly: POM/PA66  
Spring: Steel  
Sealing/O-Ring: Silicone  
Terminals: Brass with Gold Plated  
Contact: Copper Silver Plated

### Operating Environment

Operating Temperature: -25 $^{\circ}C$  to +55 $^{\circ}C$   
Sealing/Protection: IP65

NOTE: Specifications and materials listed above are for switches with standard options. For information on specific and custom switches, please contact Customer Service.



乐清市戴尔电子有限公司  
YUEQING DAIER ELECTRON CO., LTD

DR. 制图			APPD 审核	
DE. 设计			CHKD 校对	
DIMENSIONS	Tolerance	SCALE 比例	UNIT 单位	
0.00 ~ 10.00mm	$\pm 0.15mm$	1:5/1	mm	
10.01 ~ 30.00mm	$\pm 0.20mm$	TITLE 名称		
30.01 ~ 80.00mm	$\pm 0.25mm$	PUSH BUTTON SWITCH		
80.01 ~ 150.00mm	$\pm 0.30mm$	DWG NO. 图号		SIZE 图纸
150.01mm†	$\pm 0.40mm$	LAS3-16F-W11EL		A
FILE NAME 档案名称			SHEET 张	REV. 更改
			1/1	1