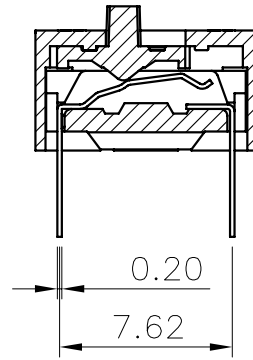
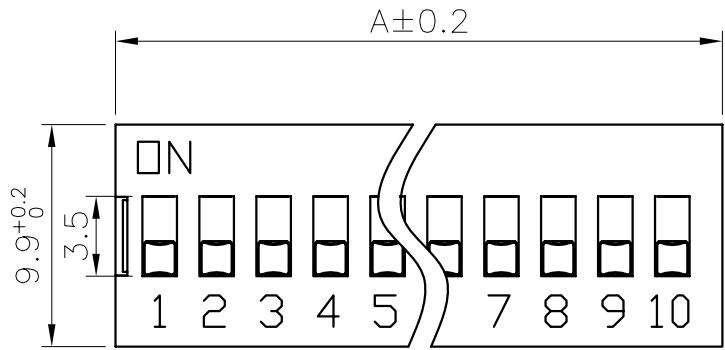


REV.	DESCRIPTION	DRAWN	CHECKED	APPROVED
A	NEW RELEASE	LXB		



SECTION A-A

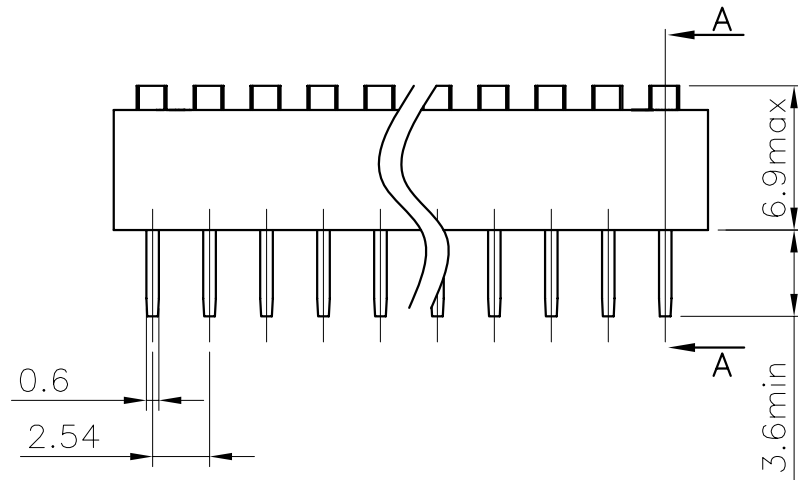
Note:

I. MECHANICAL

- 1、 Operation Force :8N Max
- 2、 Operation Temp : -25°C~+70°C
- 3、 Storage Temp : -40°C~+85°C
- 4、 Stroke :2mm

II. ELECTRICAL

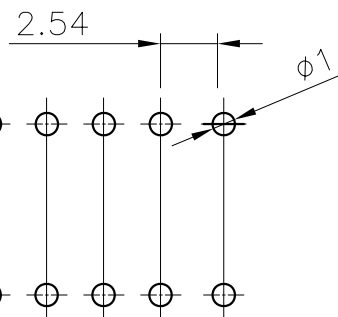
- 1、 Electrical Life:2000 operations cycles per switch 24VDC, 25mA
- 2、 Non-Switching Rating : 100mA, 50VDC
- 3、 Switching rating:25mA, 24VDC
- 4、 Contact resistance : (a) 500 mΩ max. at initial (b) 100 mΩ min . after life test
- 5、 Insulation Resistance : 100MΩ Min, AT 500VDC
- 6、 Dielectric Strength : 500VAC / 1 minute
- 7、 Capacitance : 5pF max
- 8、 Circuit : Single pole double throw



PROD. NO.	Position	DIM. A (mm)
DS-02	2	6.64
DS-03	3	9.18
DS-04	4	11.72
DS-05	5	14.26
DS-06	6	16.8
DS-07	7	19.34
DS-08	8	21.88
DS-09	9	24.42
DS-10	10	26.96
DS-12	12	32.04

III. SOLDERING AND CLEANING PROCESSES

- 1、 Keep all switch contacts in their "OFF" position for all operations
- 2、 WAVV SOLDERING : Recommended Solder Temperature at 240°C max. 20 seconds
- 3、 HAND SOLDERING : Use a soldering iron of 30 watts, controlled at 270°C approximately 2 seconds while applying solder
- 4、 CLEANING PROCESS:When vapor methods are used do not subject the switch to solvents at temperature above 125° F (51°C)



P. C. B LAYOUT

=R