



SPECIFICATIONS

CONTACT RATING: Max. 0.4 VA max. @ 48 VAC or DC

MECHANICAL LIFE: minimum 40,000 operations.

CONTACT RESISTANCE: 50 mΩ max.

INSULATION RESISTANCE: 1,000 MΩ min./500VDC

DIELECTRIC STRENGTH: 500 Vrms min.@sea level.(initial value)

OPERATING TEMPERATURE: -20°C to 85°C.

INGRESS PROTECTION: IP67(In house test)

MATERIALS

ACTUATOR: Brass with chrome plated, internal o-ring sealed.

BUSHING & HOUSING: SPCC

CASE: Glass filled nylon 6/6, flame retardant, heat stabilized (UL94v-0)

SWITCH SUPPORT: Brass, tin plated.

CONTACT: Phosphor bronze gold plated over nickel barrier.

TERMINALS: Brass, gold plated.

TERMINAL SEAL: Epoxy

HOW TO ORDER

MODEL NO.	TERMINAL TYPE	TERMINAL PLATING	SEAL	RoHS SOLDERING
<p>SP</p> <p>2TES1 ON-NONE-ON</p> <p>2TES2 ON-NONE-(ON)</p> <p>2TES3 ON-OFF-ON</p> <p>2TES4 (ON)-OFF-(ON)</p> <p>2TES5 ON-OFF-(ON)</p> <p>2TES9 OFF-NONE-ON</p>	<p>M2 PC thru-hole</p> <p>M6 Right angle, PC thru-hole</p> <p>M7 Vertical right angle, PC thru-hole</p>	<p>R Gold</p>	<p>E EPOXY (std)</p>	<p>S RoHS & Lead Free</p>
<p>DP</p> <p>2TED1 ON-NONE-ON</p> <p>2TED2 ON-NONE-(ON)</p> <p>2TED3 ON-OFF-ON</p> <p>2TED4 (ON)-OFF-(ON)</p> <p>2TED5 ON-OFF-(ON)</p>				

EXAMPLE: 2TES1M2RES



2TE Series

Sub-Miniature Toggle Switches(Washable)



2TE
Toggle Switches

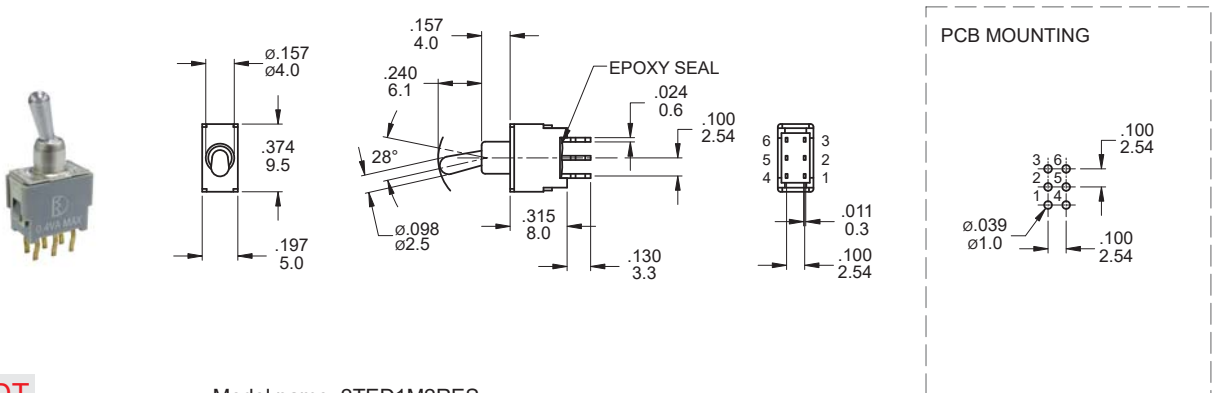
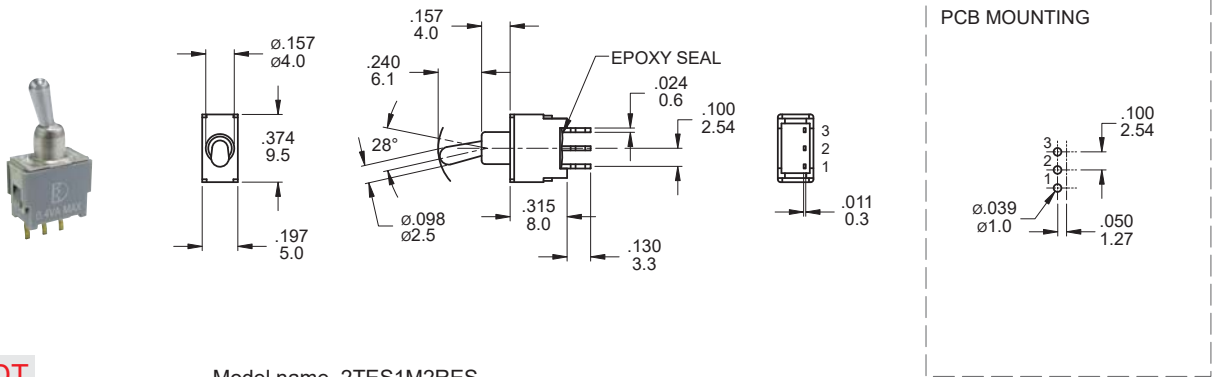
▼ SWITCH FUNCTION

NO. POLES	MODEL NO.	SWITCH FUNCTION			CONNECTED TERMINALS / SCHEMATIC		
		POS.1	POS.2	POS.3	POS.1	POS.2	POS.3
SP	2TES1	ON	NONE	ON		N/A	
	2TES2	ON	NONE	(ON)			
	2TES3	ON	OFF	ON			
	2TES4	(ON)	OFF	(ON)	OPEN	N/A	
	2TES5	ON	OFF	(ON)			
	2TES9*	OFF	NONE	ON	OPEN	N/A	2-1
DP	2TED1	ON	NONE	ON		N/A	
	2TED2	ON	NONE	(ON)			
	2TED3	ON	OFF	ON			
	2TED4	(ON)	OFF	(ON)	OPEN	N/A	
	2TED5	ON	OFF	(ON)			

()=MOMENTARY

* Omit terminal 3

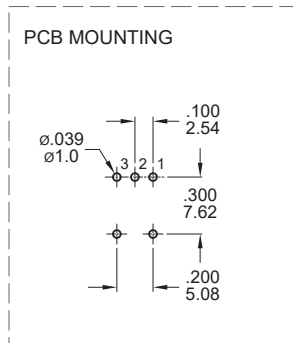
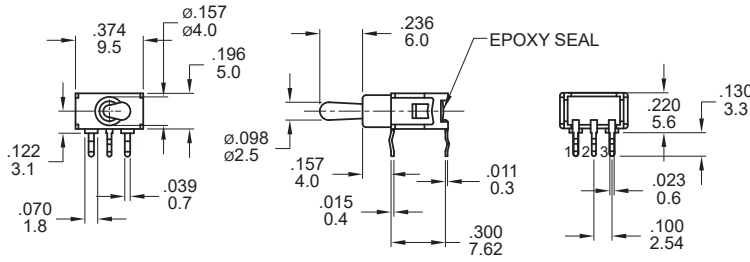
▼ POLE OPTIONS





▼ **TERMINAL OPTIONS**

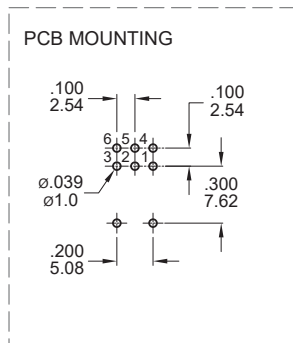
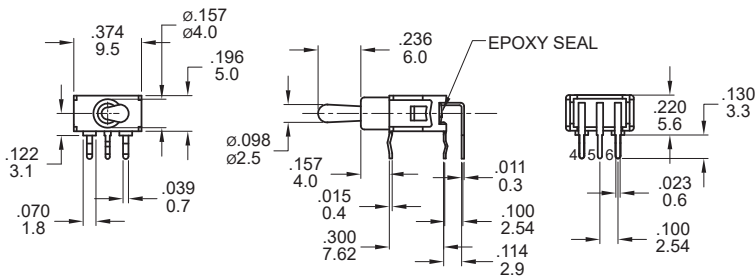
M6



SPDT

Model name. 2TES1M6RES

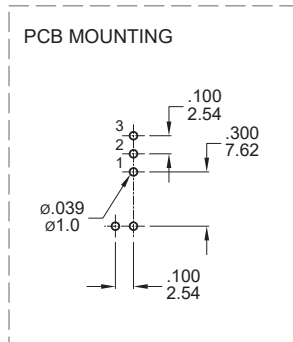
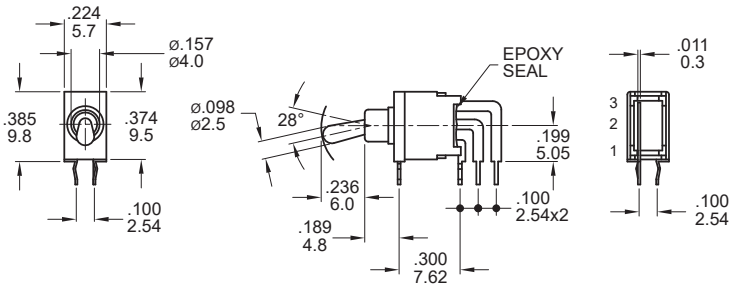
M6



DPDT

Model name. 2TED1M6RES

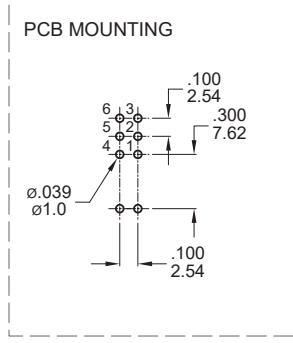
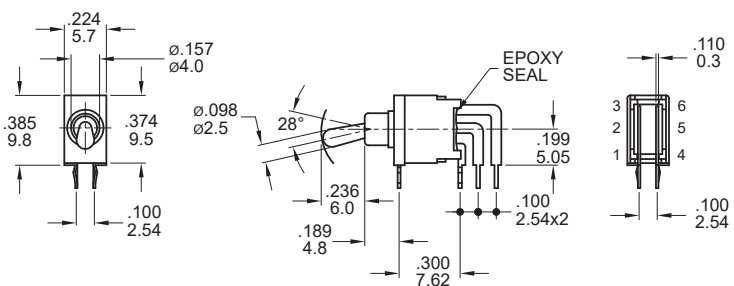
M7



SPDT

Model name. 2TES1M7RES

M7



DPDT

Model name. 2TED1M7RES

▼ **SOLDERING PROCESS**

WAVE SOLDERING: Recommend soldering temperature: $260 \pm 5^\circ\text{C}$

Duration of solder immersion: Max 5 sec. (PCB thickness is 1.6mm)