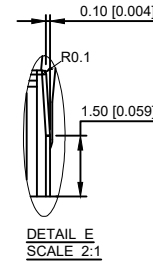
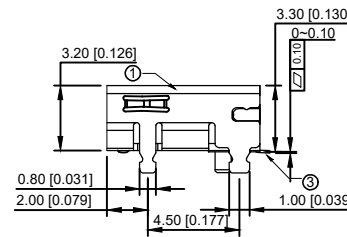
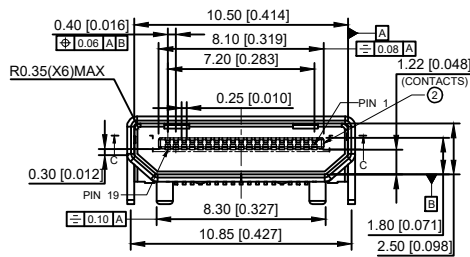


XKB CONNECITITY

NOTE:

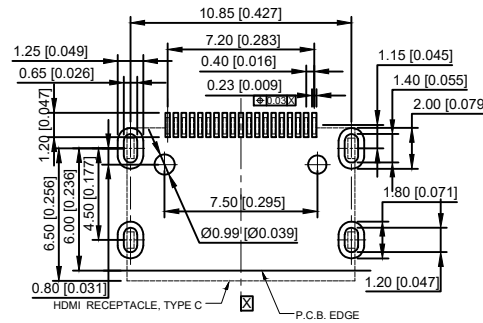
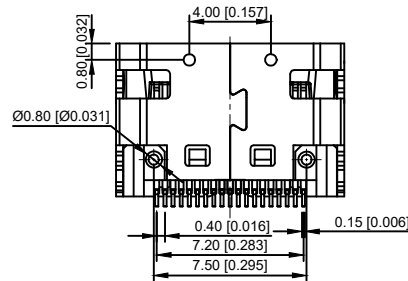
- 1.MECHANICAL:
 - 1.1 INSERTION FORCE:45Kgf MAX
 - 1.2 WITHDRAW FORCE:0.71Kgf~2.55Kgf
- 2.ELECTRICAL:
 - 2.1 CONTACT CURRENT RATING:0.5A MAX
 - 2.2 VOLTAGE RATING:40V AC(RMS)
 - 2.3 DIELECTRIC WITH STANDING VOLTAGE: 500V AC FOR 1 MINUTE
 - 2.4 INSULATION RESISTANCE:100 MEGAOHMS MIN
 - 2.5 CONTACT RESISTANCE:30 MILLIOHMS MAX
- 3.ENVIRONMENTAL:
 - 3.1 OPERATING TEMPERATURE:-25~+85



XKB CONNECITITY

A71-05H3-1X1N1

1:Au 1U"
5:Au 15U"
6:Au 30U"



RECOMMENDED PCB LAYOUT
XKB CONNECITITY

3	CONTACTS	19	COPPER ALLOY,GOLD PLATED OVER NICKEL ON CONTACT AREA AND 100u" MIN.TIN PLATED OVER NICKEL ON SOLDER TAILS
2	HOUSING	1	THERMOPLASTIC UL94V-0
1	SHELL	1	COPPER ALLOY, NICKEL PLATED

					ANGLAR	±5°	DSND	DATE	SCALE: N/A	MODEL TYPE: HDMI CONNECTOR		
ΔX					L ≤ 4	±0.2	DWN	DATE	VIEW:	PART NO.: A71-05H4-1X1N1		
ΔX					4 < L ≤ 16	±0.3	CHKD	DATE	UNIT: mm/in	DWG NO.: A71-05H4-1X1N1		
ΔX					16 < L ≤ 63	±0.4	APPD	DATE	SIZE: A4			
MARK	DESCRIPTION	DATE	REVISED	APPROVED	L > 63	±0.5						
REVISIONS					UNSPECIFIED TOLERANCES		XKB INDUSTRIAL PRECISION CO.,LIMITED			WEIGHT 1.0g	SHEET 1/1	REVISION A0
www.xk-dg.cn www.helloxkb.com www.helloxkb.cn												