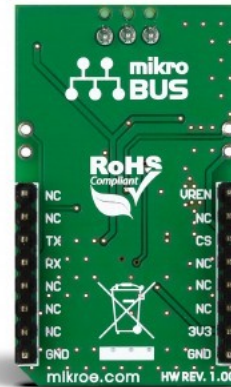
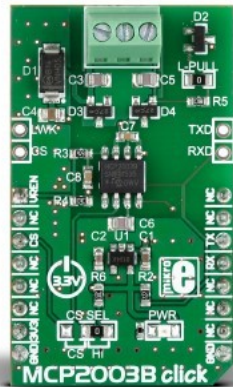


MCP2003B Click



PID: MIKROE-2227

MCP2003B click is a physical interface to automotive and industrial LIN systems, in accordance to the LIN Bus Specifications Revision 2.2, SAE J2602 and ISO 17987

Mikroe produces entire development toolchains for all major microcontroller architectures.

Committed to excellency, we are dedicated to helping engineers bring the project development up to speed and achieve outstanding results.



ISO 27001: 2013 certification of informational security management system.
 ISO 14001: 2015 certification of environmental management system.
 OHSAS 18001: 2008 certification of occupational health and safety management system.



ISO 9001: 2015 certification of quality management system (QMS).

Specifications

Type	LIN
Applications	Prototyping sensor networks for vehicles
On-board modules	Bi-directional LIN transceiver
Key Features	MCP2003B IC, Supports baud rates up to 20 Kbaud
Interface	GPIO,UART
Compatibility	mikroBUS
Click board size	M (42.9 x 25.4 mm)
Input Voltage	3.3V

Resources

[Click board™ Catalog](#)

[Click Boards™](#)

Downloads

[MCP2003B click example on Libstock](#)

[MCP2003B click schematic](#)

Mikroe produces entire development toolchains for all major microcontroller architectures.

Committed to excellency, we are dedicated to helping engineers bring the project development up to speed and achieve outstanding results.



ISO 27001: 2013 certification of informational security management system.
 ISO 14001: 2015 certification of environmental management system.
 OHSAS 18001: 2008 certification of occupational health and safety management system.



ISO 9001: 2015 certification of quality management system (QMS).