



7SEMI

EC200U-CN Firmware update guide


Version 1.0

Follow the below steps to update the EC200U-CN firmware:

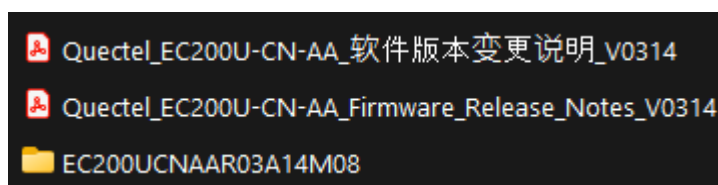
1. Download the QFlash tool from the link given → [QFlash tool](#)
Note:- Make sure you have already downloaded EC200U drivers, else we cannot proceed for firmware updation.
EC200U drivers: [EC200U drivers](#)
Guide to install the drivers: [EC200U drivers installation guide](#)

2. Download the latest firmware → [firmware](#)

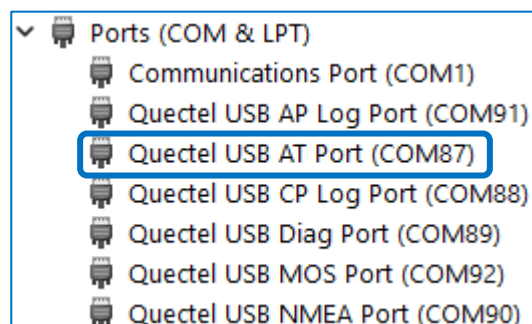
3. Unzip the firmware file and rename the file name without any spaces.

Example:-  EC200UCNAAR03A14M08

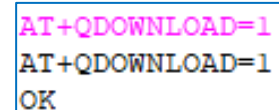
Inside the folder you should see like:



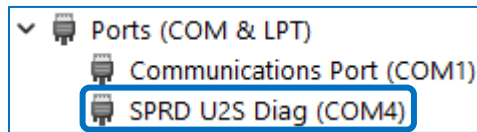
4. Now connect your board with your Desktop/ laptop.
5. You should see something like below image:



6. Now open any serial monitor to send AT command, in my case I'm using Hercules (connect to the AT port).
7. First try to send "AT" & check if it responds as OK. If yes then send command "AT+QDOWNLOAD=1" to enter into firmware update.

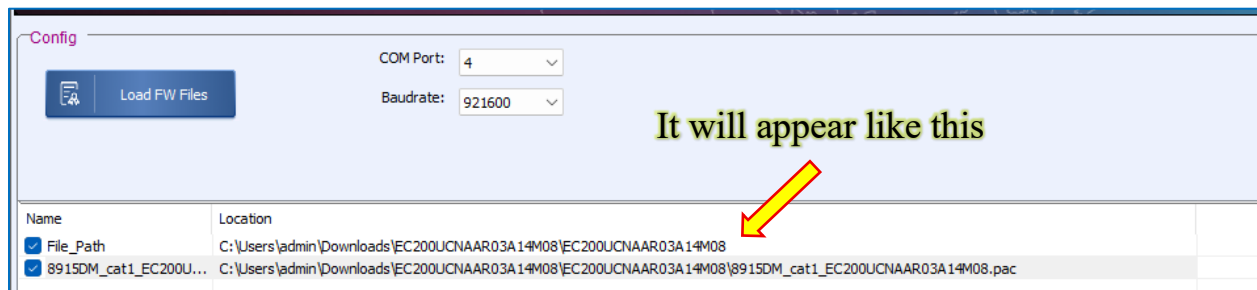


8. Now you should see a COM port like below image:

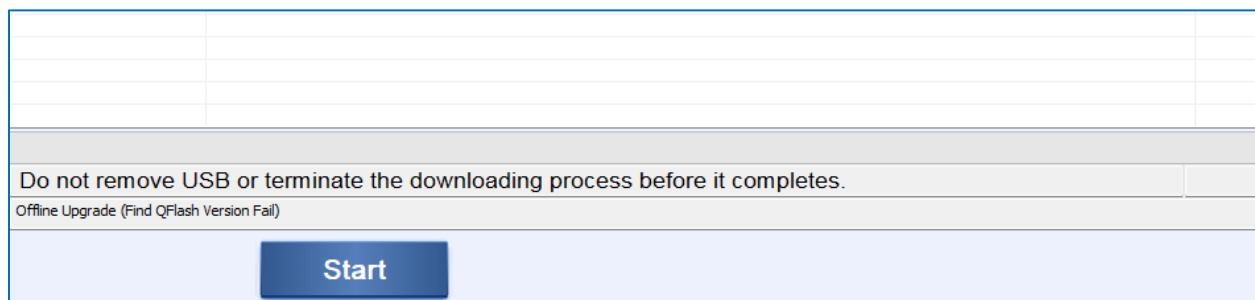


9. After that open QFlash tool, select COM port assigned to SPRD U2S Diag. In my case it is COM4. Select baudrate as 921600.

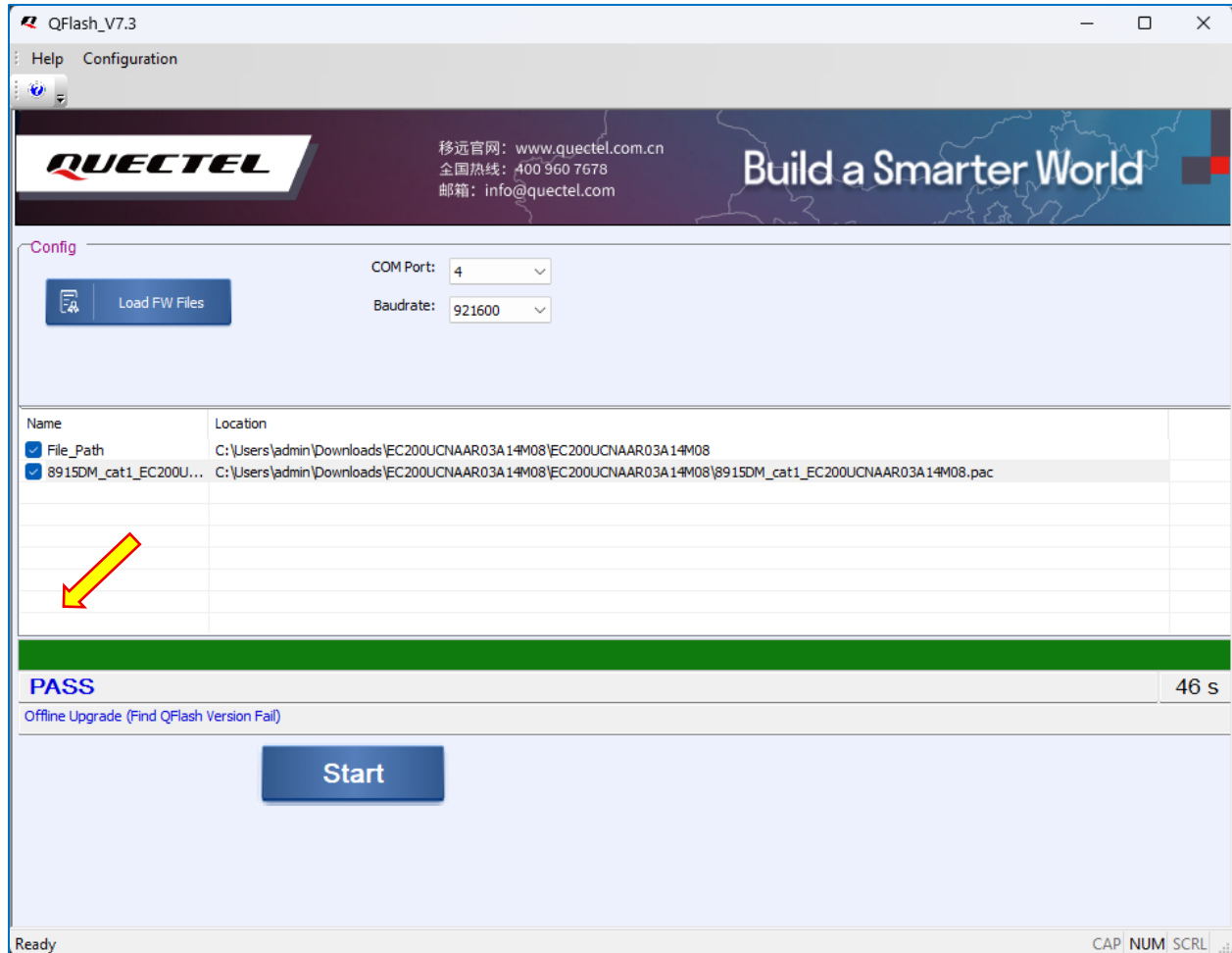
10. Click on Load FW Files, and select the .pac file. Inside the firmware folder you will get the .pac file.



11. Click on start button



PASS message should appear, just power reset your board and you are good to go.
You can check the firmware version with command ATI.



```
ATI
ATI
Quectel
EC200U
Revision: EC200UCNAAR03A14M08
OK
```

Note:- This guide is suitable for the following 7Semi products:
CM-10132, CM-10136, CM-10124, CM-10129, DC-10120, DC-10121, DC-10119